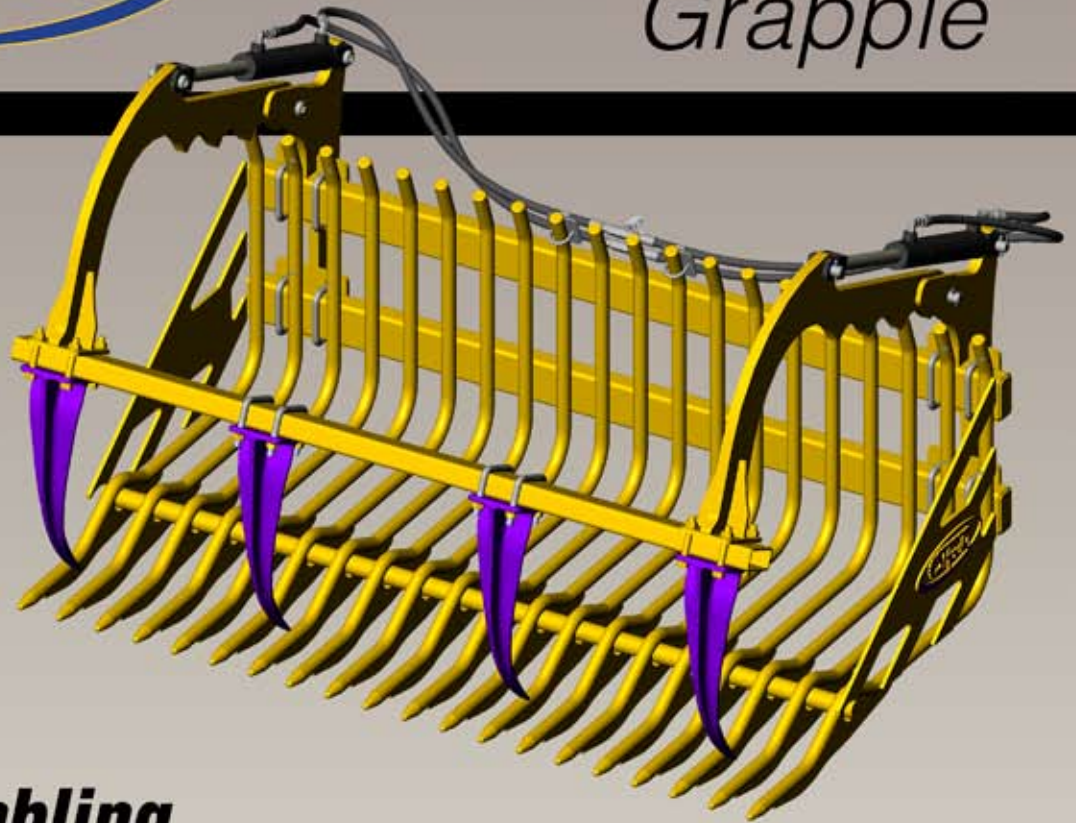
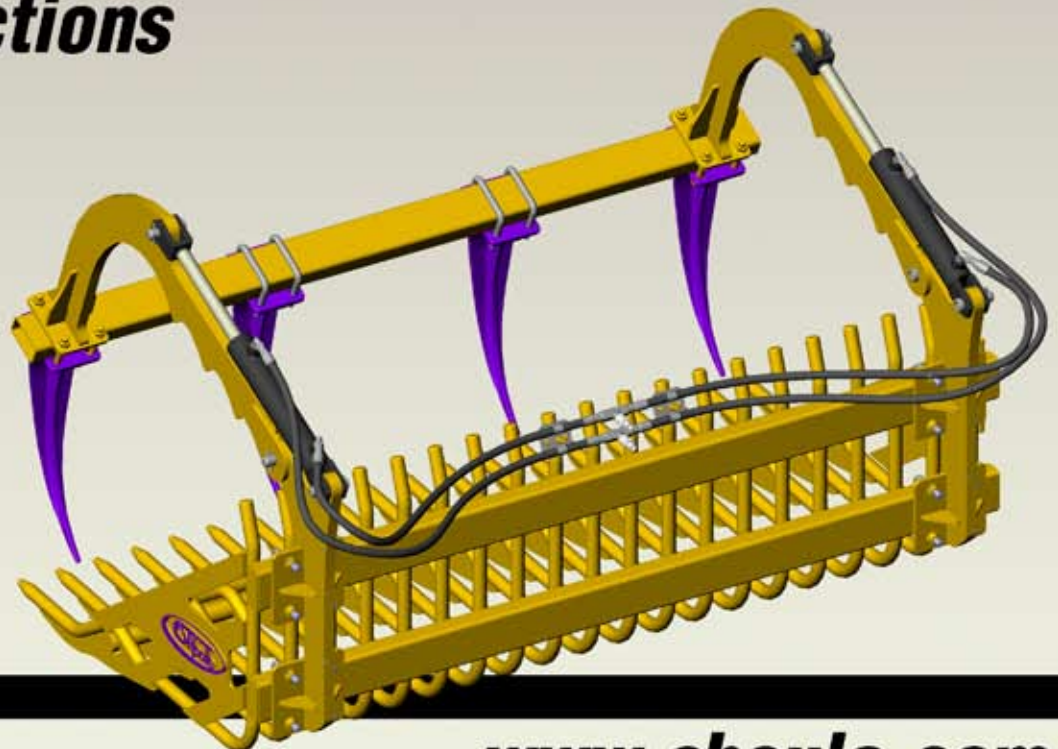




GP-06 Grapple



Assembling Instructions



**Built
to LAST**

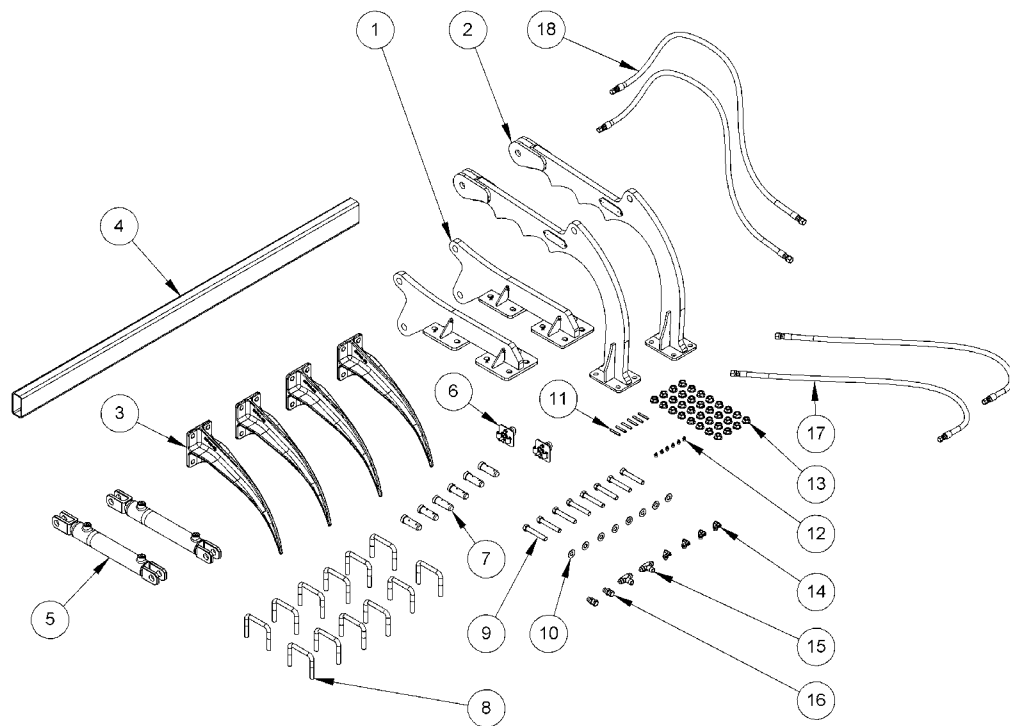
www.shoule.com

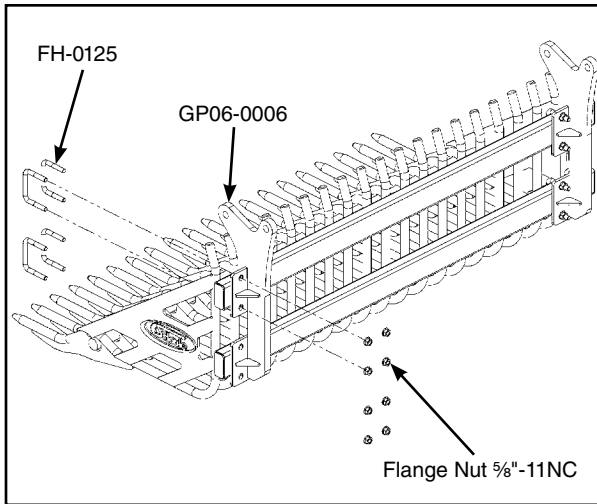


GP06 Kit



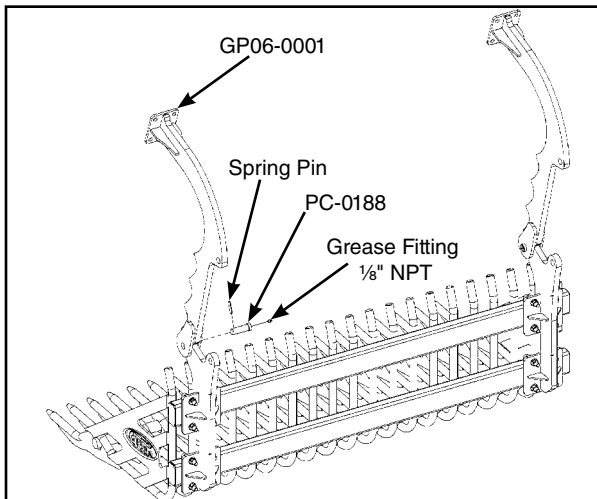
No	Item	Description	Qty
1	GP06-0006	Arm Support Ass'y	2
2	GP06-0001	Arm Ass'y	2
3	GP05-0003	Teeth (Casting)	4
4	GP05-0004	HSS Tube 4" x 2" x 3/16"	1
5	20FEM10	Hyd. Cylinder 2"Ø x 10" Stroke	2
6	PC-0181	Hyd. Hose Bracket Ass'y	2
7	PC-0188	Greasable Pin 1"Ø	6
8	FH-0125	"U" Bolt 5/8"-11NC x 4 1/8" lg	12
9	---	Hexagonal Bolt 5/8"-11NC x 4" lg	8
10	---	Flat Washer 5/8"	8
11	---	Spring Pin 5/16" x 2" lg	6
12	---	Grease Fitting 1/8" NPT	6
13	---	Flange Nut 5/8"-11NC	32
14	FH-0042	90° Hyd. Fitting (3/8" ORB(M) / 3/8" JIC(M))	4
15	FH-0044	Union Tee Hyd. Fitting (1/2" JIC(M) / 1/2" NPT(M) / 1/2" JIC(M))	2
16	31003	Flow Restrictor Fitting (1/2" NPT(M) / 1/2" NPT(F))	2
17	BH.375-43po	3/8"Ø Hyd. Hose (3/8" JIC(F) / 1/2" JIC(F)) x 43" lg	2
18	BH.375-51po	3/8"Ø Hyd. Hose (3/8" JIC(F) / 1/2" JIC(F)) x 51" lg	2





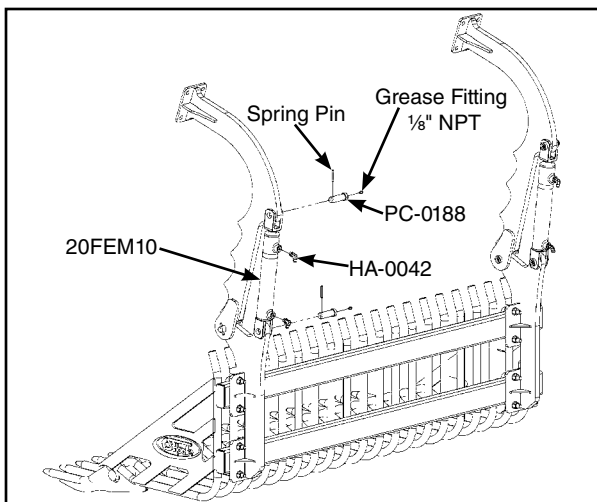
Step 1

With "U" bolt (FH-0125) and Flange Nut, fix Arms Support (GP06-0006) at each end of your bucket.



Step 2

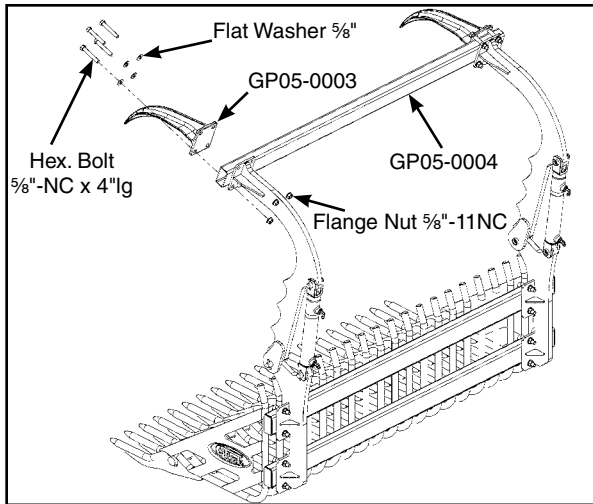
Fix Arms (GP06-0001) on Arms Support (GP06-0006) using a PC-0188 Pin. Block the Pin with a Spring Pin. Screw a Grease Fitting on Pins.



Step 3

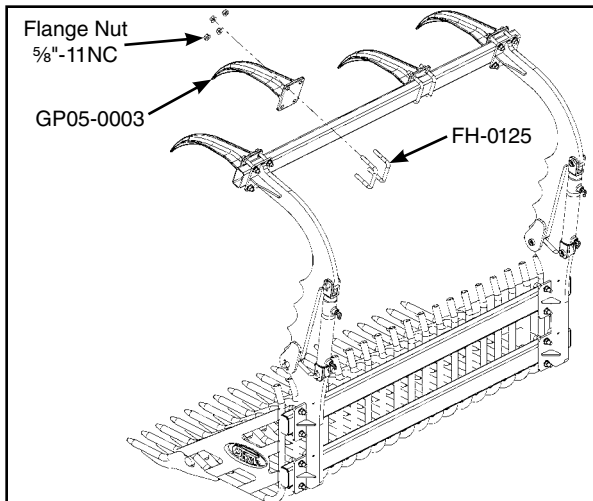
Mount Cylinders with PC-0188 Pins. Block Pins with a Spring Pin. Put the rod side of the Cylinder on the Arm (GP06-0001) and the bottom side on the Arm Support (GP06-0006). Screw a Grease Fitting on Pins. **DON'T USE PINS PROVIDED WITH CYLINDERS.**

Fix 90° Hydraulic Fittings (HA-0042) on each cylinder.



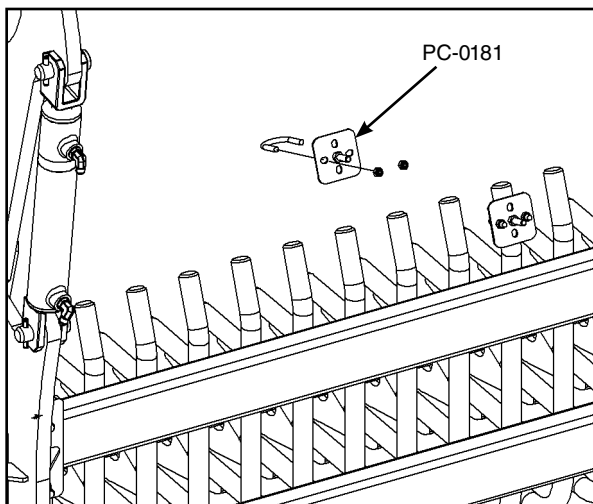
Step 4

Mount external teeth (GP05-0003) and Tube (GP05-0004) with Hex. Bolt, Flat Washer and Flange Nut. If the Tube received is too large, you can cut it at the right dimension.



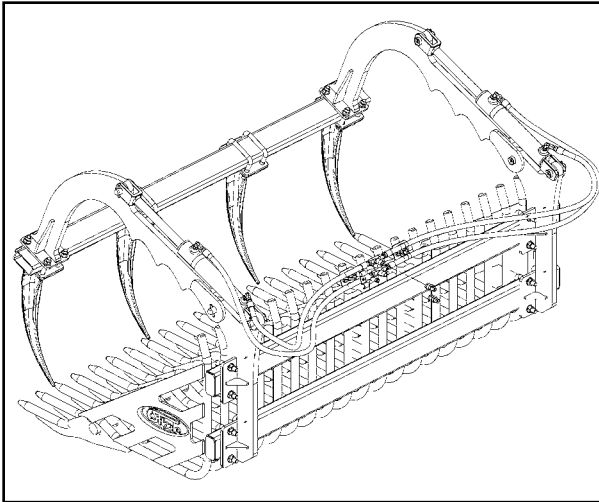
Step 5

Install the other Teeth (GP05-0003) on the Tube (GP05-0004) with "U" Bolt and Flange Nut. Split the distance between each tooth.



Step 6

Install Hyd. Hoses Brackets (PC-0181) on bucket tine. Jump two or three tines between each Bracket.



Step 7

Install Hyd. Hoses on Cylinders and Union Tee Fitting. Fix Hyd. Hoses with Hoses Clamp on Hyd. Hose Brackets. Screw on Flow Restrictor Fitting with Union Tee Fitting.

