

**LAND LEVELER  
DITCH BLADE**



**EQUIPMENT BUILT  
TO LAST**



[www.shoule.com](http://www.shoule.com)

# SLN MODEL

# TOUGH



## SLN AND LN

These models of land levelers are designed to level any type of terrain, whatever the irregularities or soil composition. Land levelers even out and correct the terrain, to facilitate better soil drainage. With their unbeatable strength, our land levelers are the most efficient piece of equipment you can use to level terrain. Their many features, including hydraulic control, make them a highly reliable tool.

All our models are equally tough and durable. You can have the peace of mind of knowing that our land levelers will give you their best performance for many years. Here are some of the advantages of our SLN and LN models:

- The wheels of these land leveler models are mounted in tandem, to eliminate shimmying and provide **GREATER STABILITY**.
- The curved cutting blade (standard on the LN model and available as an option on the SLN model) tumbles the soil as it is collected, resulting in a more even distribution.
- All pivot points are assembled using bushings that are either self-lubricating or can be lubricated, making maintenance easier.

The SLN is the most rugged of our land levelers. Made to get through any obstacle in its path, it endures and gets the job done.

Model	Capacity	Weight	Recommended HP	Tires
<b>SLN</b>				
SLN-18	290 ft <sup>3</sup> / 8 m <sup>3</sup>	12,185 lbs / 5,527 kg	300 HP (223 kW) and +	16.5 L x 16.1
SLN-20	325 ft <sup>3</sup> / 9 m <sup>3</sup>	12,800 lbs / 5,805 kg	300 HP (223 kW) and +	16.5 L x 16.1

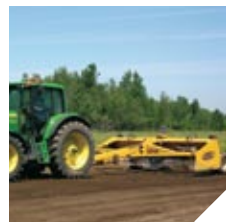
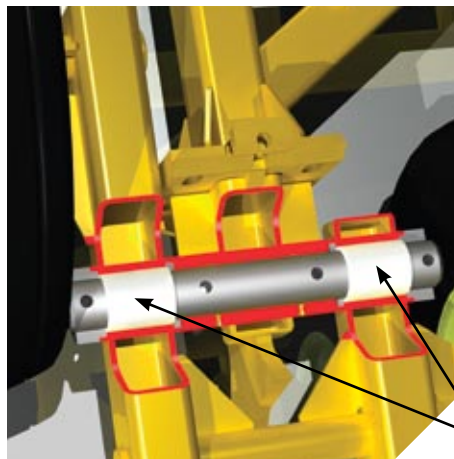
**We offer numerous models of attachments, suitable for ALL TYPES of tractors and loaders.**

# LN MODEL

# SOLID



- The LN model is equipped with powerful 3 in (8 cm) (or 3 1/2 in (9 cm) for the model LN-18) hydraulic cylinders that let you raise and lower the 39 in (99 cm) high basket efficiently.
- The SLN model is equipped with powerful 4 in (10 cm) hydraulic cylinders that let you raise and lower the 46 in (1.16 m) high basket efficiently.
- Both models are equipped with a jack to facilitate storage.
- Two types of attachment (single or double) are available, to **SUIT ANY MODEL TRACTOR**.
- A positioning light system is offered as an option. Your safety and that of others will be greatly improved while on the road.
- Both models are equipped with an adapter to **FACILITATE THE INSTALLATION** of a laser or satellite system.
- Both models are equipped with lateral blades. All blades are **MADE OF HARDENED STEEL** so they will last longer. Additionally, all blades are bolted on, so you can replace them if needed.

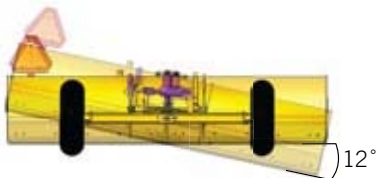


The SLN and LN land levelers both have nylon bushings.

Model	Capacity	Weight	Recommended HP	Tires
<b>LN</b>				
LN-14	127 ft <sup>3</sup> / 3.6 m <sup>3</sup>	5,580 lbs / 2,531 kg	100 to 225 HP (75 to 168 kW)	11.5 L / 15
LN-16	145 ft <sup>3</sup> / 4.1 m <sup>3</sup>	6,000 lbs / 2,722 kg	140 to 225 HP (104 to 168 kW)	12.5 L / 15
LN-18	163 ft <sup>3</sup> / 4.6 m <sup>3</sup>	6,910 lbs / 3,134 kg	180 to 225 HP (134 to 168 kW)	31 x 13.5 / 15

# HLL MODEL

PRECISION



## HLL

The HLL model is designed for many applications: whether you need to level a field, a dirt road or parking area, landscape a large area or build an approach into a housing development, this model is up to the task. In addition, the HLL is equipped with a hydraulic cylinder that allows you to tilt the blade up to 12 degrees to either side, giving you more precision control. Its tires provide good flotation.

- Flange bearings located on either side of the pivot assembly ensure **SMOOTH VERTICAL MOVEMENT** of the basket.
- The hydraulic cylinder (3 in / 8 cm diam. X 10 in / 25 cm stroke) provides the **POWER** necessary for lifting and lowering the basket.
- With its unbeatable **RUGGEDNESS**, the HLL basket type land leveler (24 in / 61 cm high) effectively and efficiently levels terrain.
- Its characteristics make the HLL a **HIGHLY RELIABLE** tool.



Model	Capacity	Weight	Recommended HP	Tires
<b>HLL</b>				
HLL-08	37 ft <sup>3</sup> / 1 m <sup>3</sup>	1,350 lbs / 612 kg	40 to 110 HP (30 to 82 kW)	11.5 L / 15
HLL-10	46 ft <sup>3</sup> / 1.3 m <sup>3</sup>	1,500 lbs / 680 kg	60 to 110 HP (45 to 82 kW)	11.5 L / 15
HLL-12	56 ft <sup>3</sup> / 1.6 m <sup>3</sup>	1,950 lbs / 885 kg	80 to 110 HP (60 to 82 kW)	11.5 L / 15

EQUIPMENT BUILT TO LAST

# LF / LFA MODELS

# PERFECT



## LF MODEL

## LFA MODEL

The LF and the LFA are our Ditch Blades. Built in the Houle tradition of quality and durability, these blades are designed for work done on any steep incline or for use in areas where space is limited.

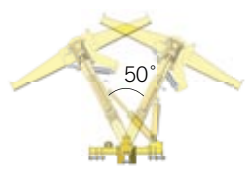
### LF

- The LF ditcher is equipped with a 4 in (10 cm) dia. hydraulic cylinder.
- The LF's blade (1/2 in x 6 in / 1.25 cm x 15.2 cm) is made of **HARDENED STEEL**.
- The LF fits tractors from 80 to 150 HP.
- The LF model is built with a mechanic rotation.



### LFA

- The LFA ditcher is equipped with 4 hydraulic cylinders, thus affording it **GREAT FLEXIBILITY** of movement.
- Its 3 point hitch is designed to be used with #2 or #3 category attachments.
- The LFA's blade (1/2 in x 6 in / 1.25 cm x 15.2 cm) is made of hardened steel.
- With a rear wheel module (sold as an option), the LFA ditcher can be converted to a "mini land leveler". In addition, lateral sides can also be added to the blade.
- The LFA fits tractors from 80 to 150 HP.



Model	Width	Weight	Blade height	Sides	Wheels
<b>LF</b>					
LF	8 ft / 2.43 m	1,500 lbs / 680 kg	24 in / 61 cm	optional	N/A
<b>LFA</b>					
LFA-08	8 ft / 2.43 m	1,825 lbs / 828 kg	20 in / 51 cm	optional	optional
LFA-10	10 ft / 3 m	2,020 lbs / 916 kg	20 in / 51 cm	optional	optional

**TO LEARN MORE ABOUT OUR PRODUCTS:  
DIAL 1 888 404-4380 OR VISIT WWW.SHOULE.COM**



## WE ARE ACCESSIBLE WORLDWIDE

### Why do Fabrication S. Houle levelers offer the reliability and performance of tomorrow?

- Because we're at the heart of the farming community, we understand your needs and **CONSTANTLY HAVE OUR LEVELERS TESTED.**
- Their design offer great operational reliability, thus **DECREASING THE NUMBER OF WORK HOURS.**
- Replaceable blades allow you to always work with **TOP-SHAPE EQUIPMENT.**
- Thanks to their heavy duty construction, they are revolutionizing leveling operations through their **SPEED OF OPERATION.**

As part of our commitment to continual improvement of our products, we reserve the right to modify the products presented in this brochure without notice.



**1 YEAR**  
**WARRANTY**  
PARTS AND LABOR

**FAST**  
**DELIVERY**



### Fabrication S. Houle inc.

300 Industriel Blvd., P.O. Box 750, Saint-Germain (Quebec) CANADA J0C 1K0  
Tel.: 819 395-4380 • Toll free: 1 888 404-4380 • Fax: 819 395-5516  
E-mail: info@shoule.com

[www.shoule.com](http://www.shoule.com)

